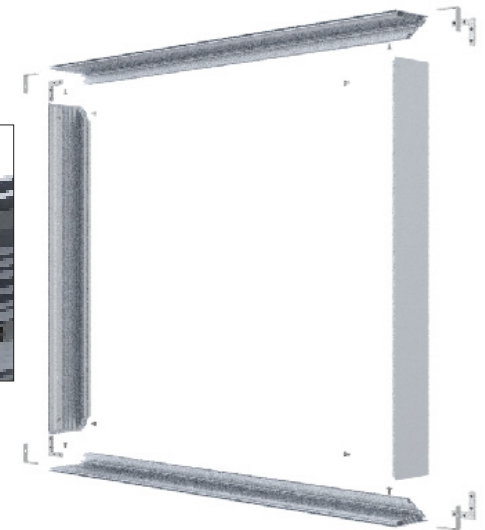
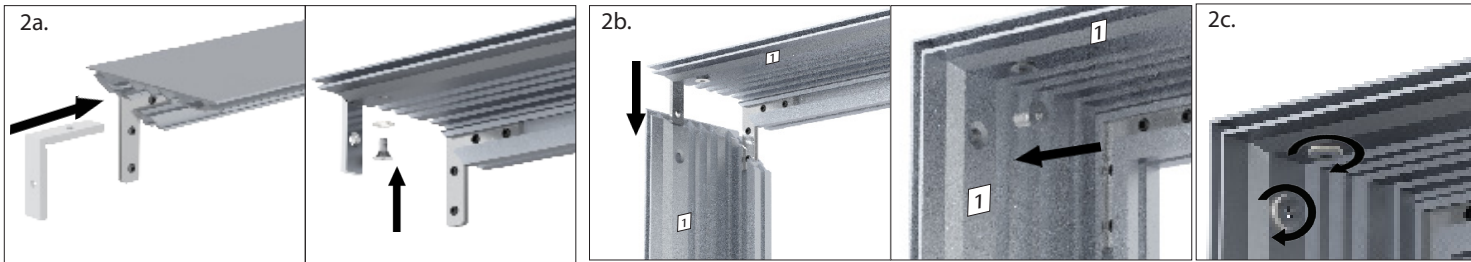
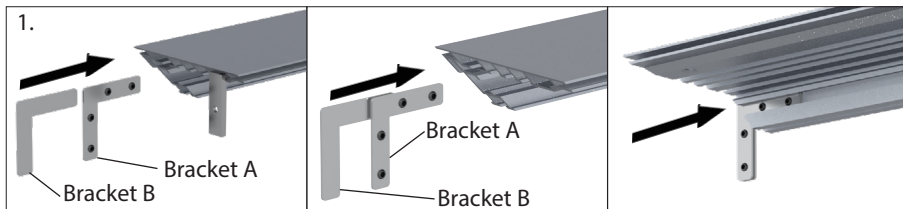
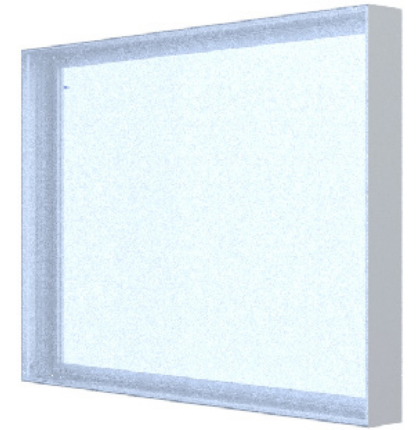


# Charisma™ SEG Single Sided Light Box - XBX Series - Without Lights

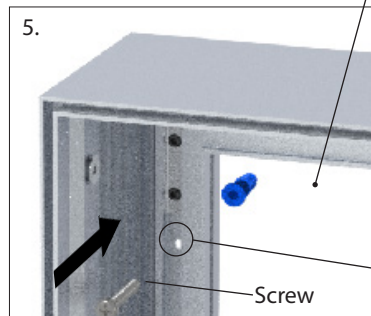
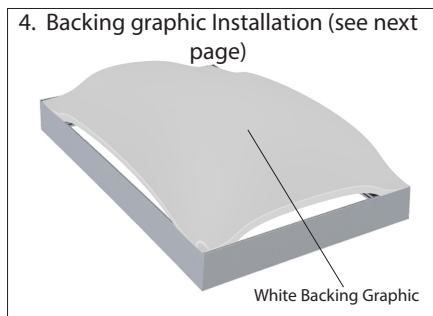
First start by assembling corners. There are three (3) brackets per corner. All extrusion sections are numbered to identify which pieces go together, 1 with 1, 2 with 2, etc.

1. Insert the flat L brackets with the four (4) set screws into the back of one extrusion segment as shown. Identical bracket with no holes goes between bracket and the extrusion, as shown in the images below. Lightly screw into place, DO NOT fully tighten.
2. *For Bent Corner Bracket:* Insert the bent bracket into the same extrusion section. Firmly screw the bracket into place. Take the mating extrusion piece with matching number. Guide the corner brackets in, then tighten all brackets.
3. Repeat assembly steps for the three remaining corners (not shown).
4. Install white backing graphic (See additional page for detailed instructions).
5. **WALL MOUNT OPTION:** *Drill mounting holes in the frame channel as needed, to align with the EXISTING WALL STUDS. Using an X-acto blade or hole puncher, puncture or cut small holes into the white backing graphic to match the holes just drilled in the frame, then mount to the wall (Mounting screws and anchors not provided).* Install front graphic (See additional page for detailed instructions).
6. Install the graphic (See additional page for detailed instructions).

NOTE: Model shown below may differ from your model, but assembly instructions remain the same.

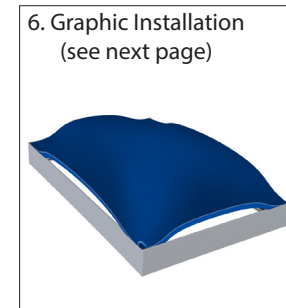


XBX34 shown



White Backing Graphic

Wall Mount Holes are drilled by customer at time of installation.



# Charisma™ SEG Single Sided Light Box - XBX Series - Without Lights

1. To install the backing graphic or front graphic, take the corner with the pull tag on it and press about 6"-10" of silicone into the frame channel (fig. 1a). Repeat for the opposite corner (fig. 1b). Repeat for the next corner (fig. 1c). Lastly, repeat for the final corner (fig. 1d).
2. After all corners are pressed in, press the silicone into the frame channel at the mid-points on all four sides.
3. Press silicone into frame evenly between the corner and midpoints.
4. To remove the graphic from the frame, simply pull up on the pull tag.

NOTE: Model shown below may differ from your model, but assembly instructions remain the same.

